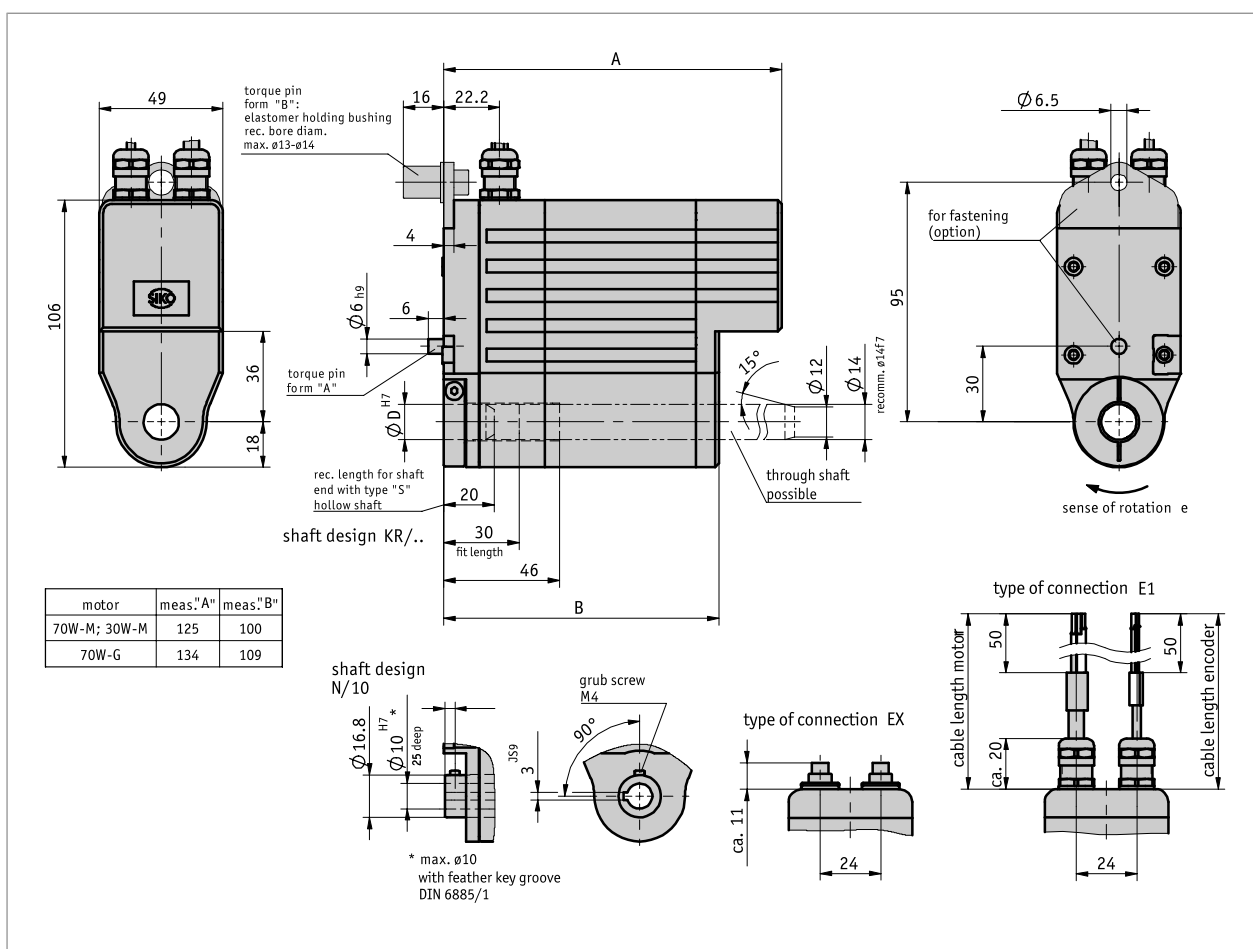


Profile

- Easy mounting
- Through hollow shafts up to max. $\varnothing 14$ mm possible
- Integrated analog absolute position encoder
- Electrical connection via cable or connector



Mechanical data

Feature	Technical data	Additional information
shaft	black-finished steel	
Housing	aluminum, powder coated zinc die cast	
Nominal torque/rated speed	1.1 Nm at 430 min ⁻¹ 2.1 Nm at 225 min ⁻¹ 4.2 Nm at 110 min ⁻¹	i = 12.4 (70 W motors) i = 24 (70 W motors) i = 48 (70 W motors)
Operating mode	S3 intermittent operation: 25 % DC, 10 min.	EN 60034-1
Weight	~1.5 kg	

Electrical data

■ Motor

Feature	Technical data	Additional information
Operating voltage	0 ... 24 V DC	70 W motors
Power input	70 W	
Rated current	2.9 A \pm 10 %, (70 W-M motor) 4.1 A \pm 10 %, (70 W-G motor)	3.2 A max. load current 4.5 A max. load current
Type of connection	2x M9 plug connectors	4-pole, 1x pin; 3-pole, 1x pin

■ Encoder potentiometer

Feature	Technical data	Additional information
Power rating	2 W at 70 °C	P10 position encoder
Resistance tolerance	\pm 5 %	P10 position encoder
Standard terminal resistance	0.2 Ω or 1 Ω	P10 position encoder (always the higher value)
Linearity tolerance	\pm 0.25 %	P10 position encoder

■ Transducer, power output

Feature	Technical data	Additional information
Operating voltage	24 V DC \pm 20 % at load 500 Ω	

■ Transducer, voltage output

Feature	Technical data	Additional information
Operating voltage	24 V DC \pm 20 %	$I_{Load} \leq 10$ mA

Ambient conditions

Feature	Technical data	Additional information
Ambient temperature	0 ... 70 °C	
Storage temperature	-20 ... 80 °C	
Relative humidity		condensation inadmissible
EMC	EN 61800-3, second environment EN 61800-3, C3	interference resistance / immission emitted interference / emission
Protection category	IP63 with mounted mating connectors	EN 60529
Shock resistance	500 m/s ² , 11 ms	EN 60068-2-27
Vibration resistance	\leq 100 m/s ² , 5 ... 150 Hz	EN 60068-2-6

pin assignment

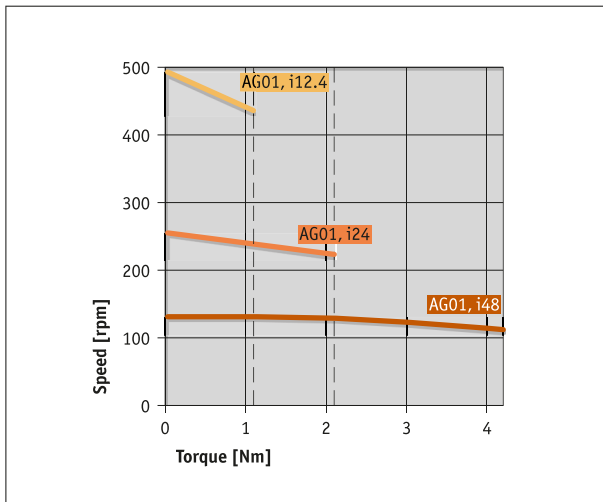
■ potentiometer

Signal	MWU	MWI	EX	E1
Po	+24 V DC	I+	1	Braun
S	Uout		2	green
Pe	GND	I-	3	white

■ Motor

Signal	EX	E1
+	1	M1, white imprinted
+	2	
-	3	M2, white imprinted
-	4	

Performance curve



Order

Ordering table

Feature	Ordering data	Spezifikation	Additional information
Gear ratio	A 48 24 12.4	i = 48 i = 24 i = 12.4	
motor performance	B 70W-M 70W-G	24 V DC 24 V DC others on request	
shaft design/diameter	C KR/14 KR/12 N/10	clamping ring ø14 mm clamping ring, ø12 mm keyway, ø10 mm	only for type S hollow shaft
hollow shaft type	D S D	blind hole full-length	
Torque pin	E A B	bolt, ø6 mm lug I	incl. elastomer bushing
Type of connection	F E1 EX	open cable socket on the device	
motor cable length	G 2	in m others on request	
encoder cable length	H 2	in m others on request	
position encoder	I P10 MWI MWU	potentiometer 10 kΩ transducer 4 ... 20 mA transducer 0 ... 10 V others on request	10 helipot potentiometer 10 helipot potentiometer 10 helipot potentiometer
potentiometer transmission*	J ...	1 ... 128 max. others on request	only for P10, MWI and MWU encoders
Sense of rotation	K i e	clockwise ascending values counter-clockwise ascending values	only for MWI or MWU encoders only for MWI or MWU encoders

* Calculation of potentiometer gear ratio: For example, if 120 revolutions are required for one adjustment, then a gear ratio of 12 should be indicated for the 10-turn potentiometer. To be precise: number of revolutions required/10 (10-turn potentiometer) = potentiometer gear ratio

Order key

AG01 analog



**Scope of delivery:**

AG01 analog, Quick Start Guide

**Accessories you can find:**

Cable extension KV03S0

www.siko-global.com

Cable extension KV04S0

www.siko-global.com

Motor control module MS02

www.siko-global.com

Overview Mating connector

www.siko-global.com

Mating connector, potentiometer, 3-pole, socket

Order key 81487

Mating connector, potentiometer, 3-pole, angle socket

Order key 82366

Mating connector, Motor, 4-pole, socket

Order key 83447