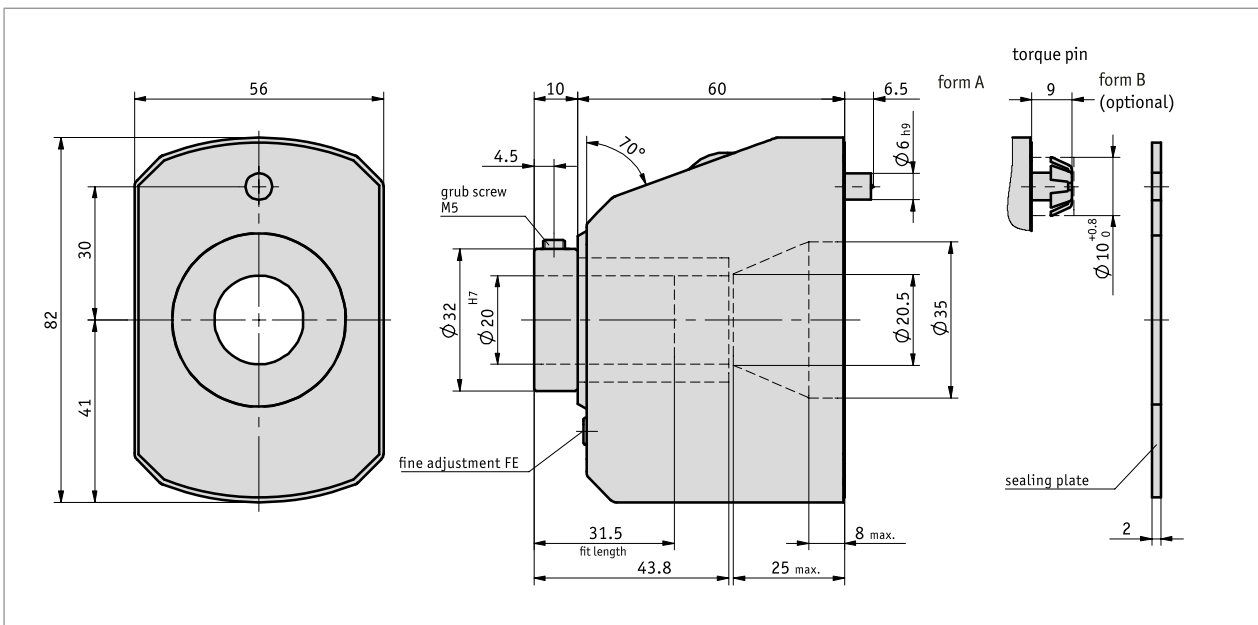


Profile

- Robust design in a metal housing
- Hollow shaft, max. \varnothing 20 mm
- Counter with 5 decades and fine reading
- Display can be designed for "mm" or "inch"
- Attenuated counter system
- Fine setting for correction of dimensions
- Reversible counting direction




Mechanical data

Feature	Technical data	Additional information
Housing	zinc die-cast	
Counter	5 Decades with fine reading	
Digit height	~7 mm	
Weight	0.5 kg	

■ max. speed

Display (after 1st revolution)	max. speed [rpm]
00010	500 (1500)
00015	500 (1000)
00020	500 (750)
00025	500 (600)
00030	500
00040	375
00050	300
00060	250
00080	180
00100	150

 Speeds >500 rpm must only be run for short periods.

Formula:

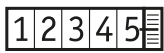
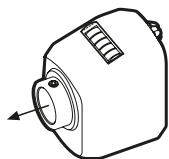
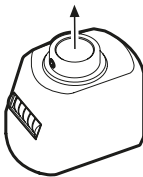
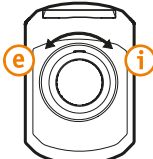
$$\text{max. speed} = \frac{15000}{\text{indication after 1st revolution}}$$

Ambient conditions

Feature	Technical data	Additional information
Ambient temperature	0 ... 80 °C	

Order

■ Ordering information

Display	Mounting position		Counting direction
			
	02	04	

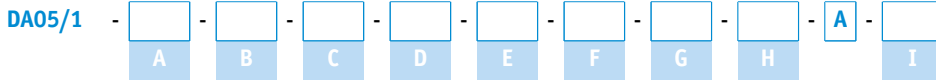
Note: Highlights in orange are order features.

■ Ordering table

Feature	Ordering data	Spezifikation	Additional information
Mounting position	A 02 04		
indication after 1st revolution	B ...	10, 15, 20, 25, 30, 40, 50, 60, 80, 100 others on request	
decimal place	C 0 1 2 3 4	0 = 00000 1 = 0000.0 2 = 000.00 3 = 00.000 4 = 0.0000	
Counting direction	D i e e/i	clockwise ascending values counter-clockwise ascending values can be adjusted by the customer	by opening the housing, see mounting instructions
hollow shaft/diameter	E	20 in mm RH8, RH10, RH12, RH14, RH16, RH18	reducing bushes
Color	F 0 S	orange RAL 2004 black RAL 9005	
fine adjustment	G FE OFE	with fine adjustment without fine graduation	

Feature	Ordering data	Spezifikation	Additional information
slipping clutch	H	RK	with sliding clutch
		ORK	without sliding clutch
labyrinth seal	I	OLD	without labyrinth seal
		LD	with labyrinth seal

■ Order key



	Scope of delivery: DA05/1, Installation Instructions
	Accessories you can find: Adapter sleeve RH

www.siko-global.com