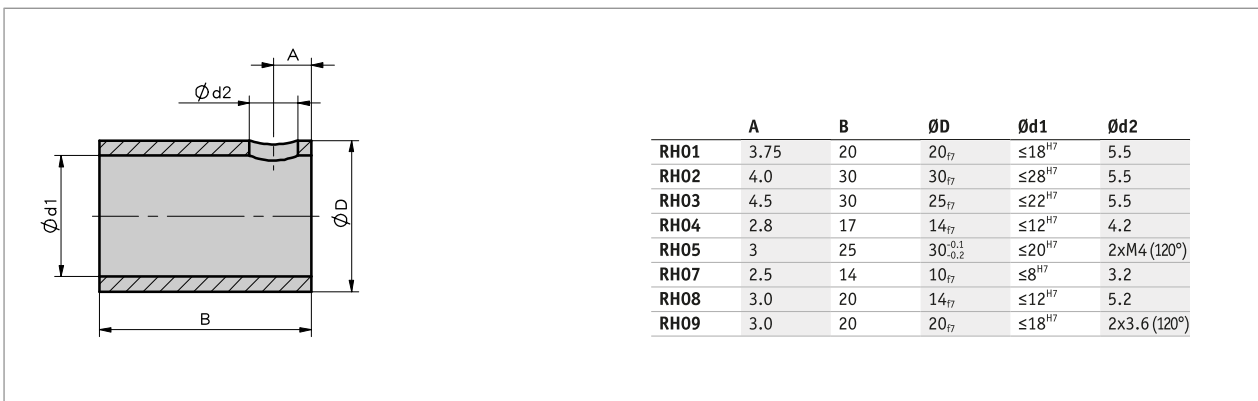
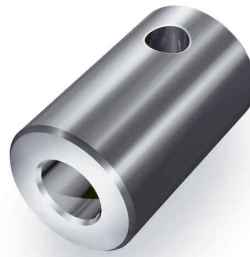


简介

- 安装简便快捷
- 发蓝处理钢材或不锈钢



机械参数

特征	技术数据	补充
材料		

	RH01	RH02	RH03	RH04	RH05	RH07	RH08	RH09
匹配指示器	DA05/1 DA08 DA09S DE10***	DA10* DA10R/1* DE10**** DE10P	DA10** DA10R/1**	DA04 DE04	KP09P	DA02 DK05	DK01 DK02	AP05 AP10*** AP20*** GS04
#dH7, 抛光钢 材料号	6, 6.35, 8, 10, 12, 12.7, 14, 15, 15.875, 16, 17, 18	10, 12, 12.7, 14, 15, 16, 18, 19.05, 20, 22, 24, 25, 25.4, 26, 28	18, 20, 22	4, 5, 6, 6.35, 8, 9.525, 10, 12	12, 14, 15, 16, 20	6, 6.35, 7, 8	5, 6, 6.35, 8, 9, 9.525, 10, 12	
#dH7, 不锈钢 材料号	VA8, VA9.525, VA10, VA12, VA12.7, VA14, VA15, VA15.875, VA16, VA19.05	VA12.7, VA20, VA24, VA25, VA25.4		VA6.35, VA8, VA9.525, VA10, VA12, VA12.7, VA13		VA8		VA8, VA9.525, VA10, VA12, VA12.7, VA14, VA15, VA15.875, VA16, VA18, VA19.05

* 只在轴 WK; ** 只在轴 WL; *** 只在轴 20; **** 只限于轴于 30
注意: 橙色突出显示的是订单特征。

订购

- 订购表格

特征	订货数据	Spezifikation	补充
安装位置	A ...	RH01, RH02, RH03, RH04, RH05, RH07, RH08, RH09	

特征	订货数据	Spezifikation	补充
内径 d1	B ...	参见表格 "机械数据表"	

■ 订购号

RH - -
A B

 供货范围:
RH, 螺纹杆